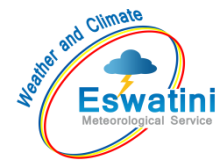


AGROMETEOROLOGICAL BULLETIN

Doc No: TEA 3/3/7/2 F-004
Revision No: 1
Effective Date: 01.07.2017
Page No: 1 of 5
Approved by:



REPORTING PERIOD:
01 – 10 FEBRUARY 2025



ISSUE No.: 13

SEASON: 2024/25

RELEASED: 13/02/2025

CONTENTS

CONTENTS	1
HIGHLIGHTS	1
RAINFALL AND TEMPERATURES	2
RAINFALL	2
TEMPERATURES	3
MAIZE AND OTHER CROPS.....	3
MAIZE CROP STAGE AND CONDITION..	3
OTHER CROPS	3
CURRENT FARMING ACTIVITY	3
LIVESTOCK AND PASTURES	3
WATER SITUATION	4
MEDIUM-TERM OUTLOOK	4
RAINFALL	4
TEMPERATURE.....	4
SOIL MOISTURE	4
WIND SPEED	4

HIGHLIGHTS

- Normal rainfall was observed...
- Good vegetation condition...
- Legume planting and weeding activities...
- Decreased but significant rainfall is anticipated...
- Cool, warm to hot temperatures forecasted...
- Improvement in soil moisture expected...

Compiled and Issued by: Agrometeorological Unit,

Swaziland Meteorological Service, Ministry of Tourism and Environmental Affairs.

Box 2652, Mbabane, Swaziland. ☎ (+268) 2404 8859 / 2404 6274. Fax: 2404 1530

E-mail: dudu@swazimet.gov.sz

AGROMETEOROLOGICAL BULLETIN

Doc No: TEA 3/3/7/2 F-004

Revision No: 1

Effective Date: 01.07.2017

Page No: 2 of 5

Approved by:

RAINFALL AND TEMPERATURES

RAINFALL

About average rainfall was observed in the 1st dekad of February 2025 (**Figure 1**) and (**Map 1**).

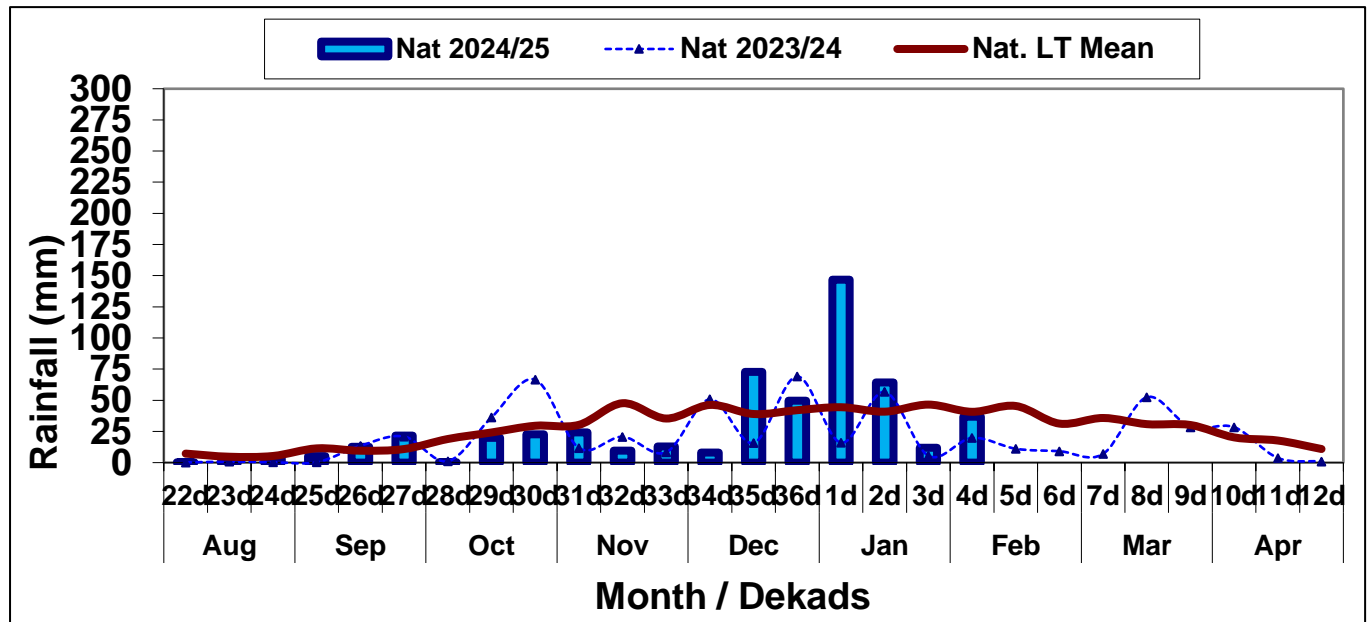
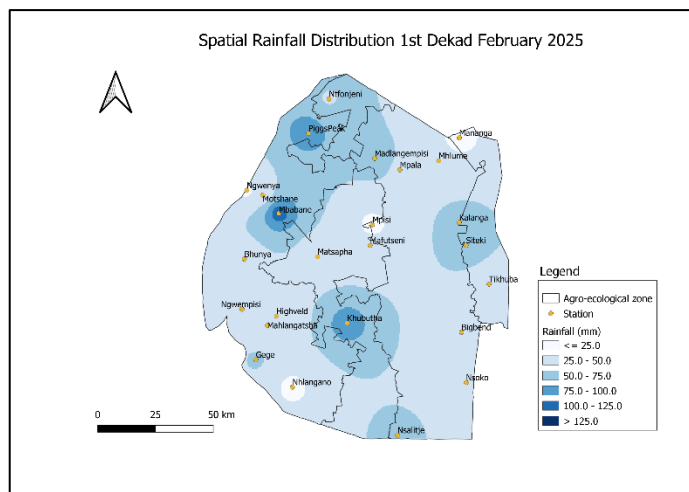
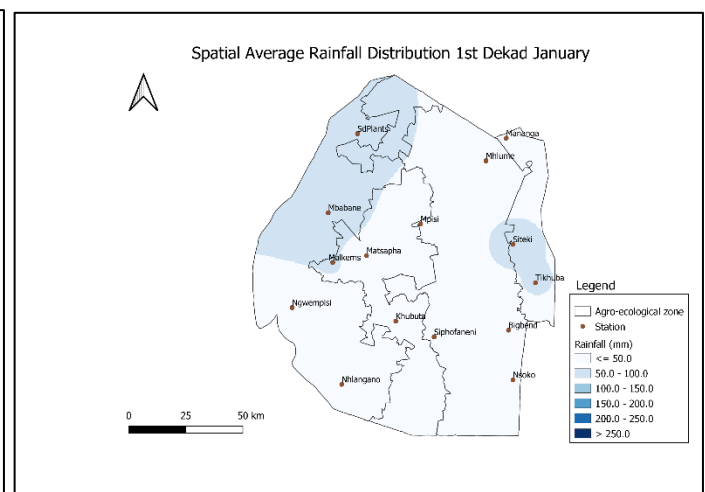


Figure 1: Rainfall distribution 1st dekad February 2025



Map 1: Spatial rainfall distribution 1st dekad February 2025



Map 2: Average Rainfall distribution 1st dekad February

Compiled and Issued by: Agrometeorological Unit,

Swaziland Meteorological Service, Ministry of Tourism and Environmental Affairs.

Box 2652, Mbabane, Swaziland. ☎ (+268) 2404 8859 / 2404 6274. 📠 Fax: 2404 1530

E-mail: dudu@swazimet.gov.sz

AGROMETEOROLOGICAL BULLETIN

Doc No: TEA 3/3/7/2 F-004

Revision No: 1

Effective Date: 01.07.2017

Page No: 3 of 5

Approved by:

Most Agro-ecological zones observed average rainfall much above their long-term (**Table 1**).

Table 1: Rainfall (mm) 1st dekad February 2023

	HV	MV	LV	LP
2023/24	35	15	11	12
Average	55	39	32	38
2024/25	39	33	35	50
Anomaly	-16	-6	3	12

TEMPERATURES

Cool to warm temperatures generally prevailed during the reporting period (**Figure 2**) and (**Figure 3**).

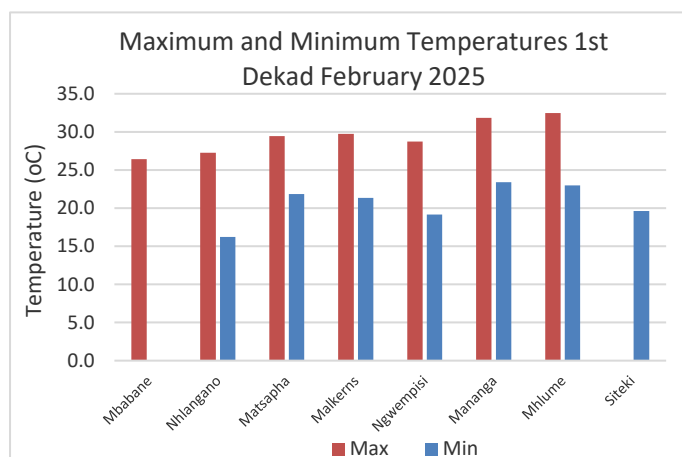


Figure 2: Minimum temperature 1st dekad of February 2025

MAIZE AND OTHER CROPS

MAIZE CROP STAGE AND CONDITION

Maize is mostly at tasseling stage.

OTHER CROPS

Farmers may plant beans in the Highveld.

CURRENT FARMING ACTIVITY

Most have already planted some legumes.

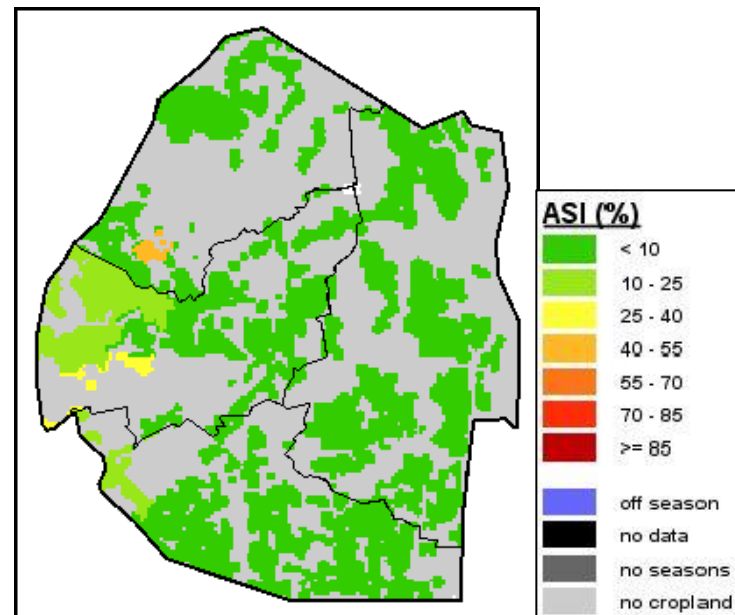


Image 1: Agriculture Stress Index 1st dekad February 2025
Source: FAO-GIEWS

LIVESTOCK AND PASTURES

Livestock is in good condition as rangelands are reported to be in good condition.

Compiled and Issued by: Agrometeorological Unit,

Swaziland Meteorological Service, Ministry of Tourism and Environmental Affairs.

Box 2652, Mbabane, Swaziland. ☎ (+268) 2404 8859 / 2404 6274. Fax: 2404 1530

E-mail: dudu@swazimet.gov.sz

AGROMETEOROLOGICAL BULLETIN

Doc No: TEA 3/3/7/2 F-004

Revision No: 1

Effective Date: 01.07.2017

Page No: 4 of 5

Approved by:

WATER SITUATION

Most dam reservoirs are at full capacities, with some even overflowing, as a result of recent rains.

MEDIUM-TERM OUTLOOK

RAINFALL

Reduced rainfall is expected in the outlook period.

TEMPERATURE

Cool, warm to hot temperatures are anticipated in the outlook period.

SOIL MOISTURE

Improvement in soil moisture is expected in the outlook period.

WIND SPEED

Wind will generally be light to moderate in the outlook period

NB: Outlook period is ten days from date of issue

Compiled and Issued by: Agrometeorological Unit,

Swaziland Meteorological Service, Ministry of Tourism and Environmental Affairs.

Box 2652, Mbabane, Swaziland.  (+268) 2404 8859 / 2404 6274. Fax: 2404 1530

E-mail: dudu@swazimet.gov.sz

AGROMETEOROLOGICAL BULLETIN

Doc No: TEA 3/3/7/2 F-004

Revision No: 1

Effective Date: 01.07.2017

Page No: 5 of 5

Approved by:

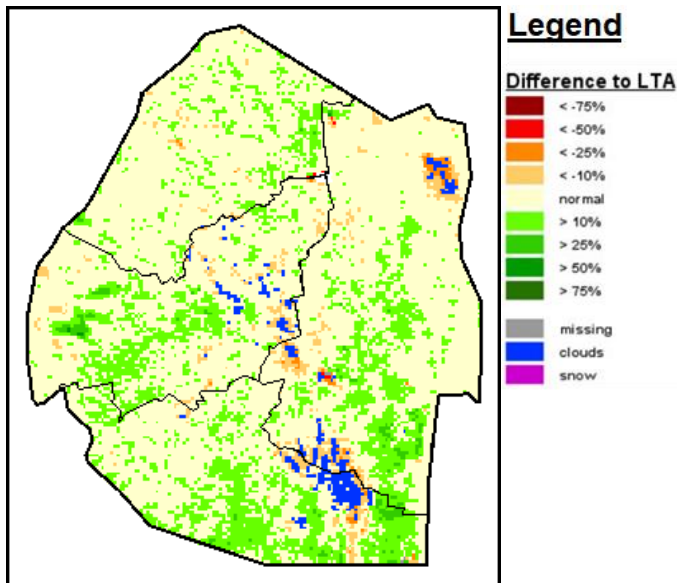


Image 2: Normalized Difference Vegetation Index (NDVI) Anomaly (1st Dekad February 2025)
Source: FAO-GIEWS

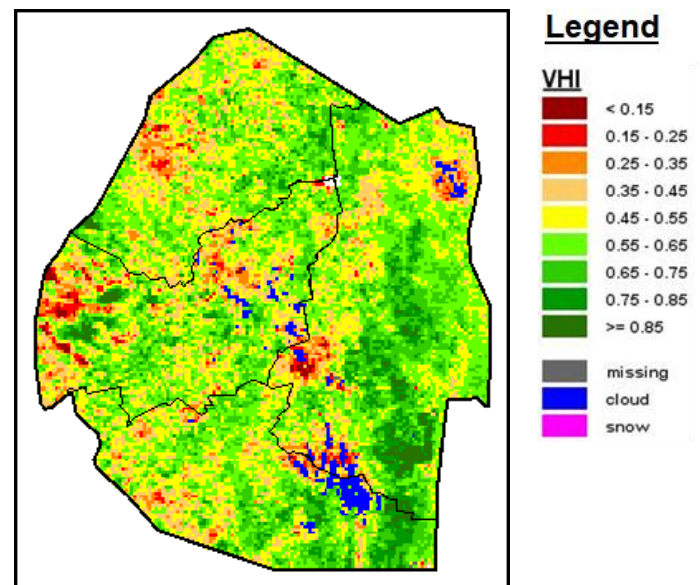


Image 3: Vegetation Health Index (VHI) (1st Dekad February 2025)
Source: FAO-GIEWS